

ADVANCED FLOW CYTOMETRY DATA ANALYSIS

June 22, 2012

Leipzig, Germany at the Congress Center Leipzig

Immediately prior to CYTO 2012

The **Advanced Flow Cytometry Data Analysis** full-day course will review a wide range of data analysis issues, tools, and strategies. The course covers: 1) experimental design (compensation for spectral overlap, proper controls, and standardization of instruments and multicenter sites), 2) a variety of data visualization approaches and statistics, 3) best practices for analyzing data from various flow cytometry applications (intracellular cytokine staining, CFSE, phosphoantigens), and 4) automated data analysis approaches. This course has been organized by Ryan Brinkman, PhD, and Pratip Chattopadhyay, PhD.

Experimental Design and Data Acquisition

- Panel Design, Compensation, Spreading Error
- Considerations for Longitudinal and Multicenter Studies

Visualizing Data

- Visualizing data and Identifying Populations
- Advanced Visualizations with FlowJo
- Data Analysis in the Cloud
- Troubleshooting Based on Staining Patterns

Reporting Results

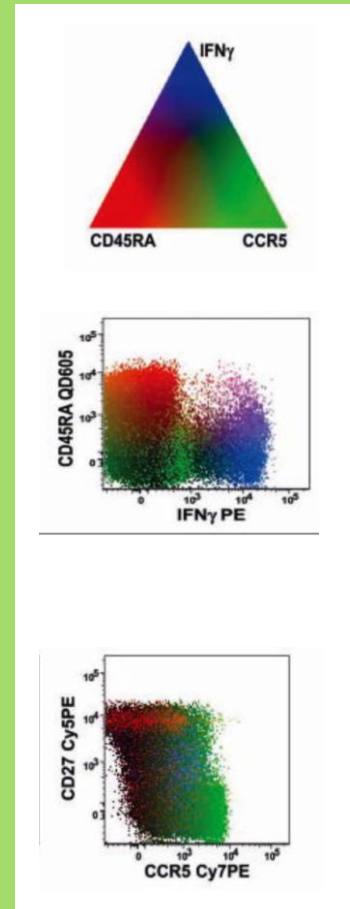
- Fundamental Statistics
- MiFlowCyt, MIATA
- Aggregating Data Across Samples

Application-Oriented Data Analysis Issues

- Intracellular Cytokine Staining
- Proliferation (CFSE)/Cell Cycle
- Phosphoantigens

Automated Data Analysis

- Broad Overview: Current Methods and Evaluation Tools
- FlowType
- Frequency Difference Gating and Probability Binning
- Gemstone



View the schedule at: <http://cytoconference.org/CYTO/pages/pre-congress-course.aspx>